

FA/ADC in fiber tracts

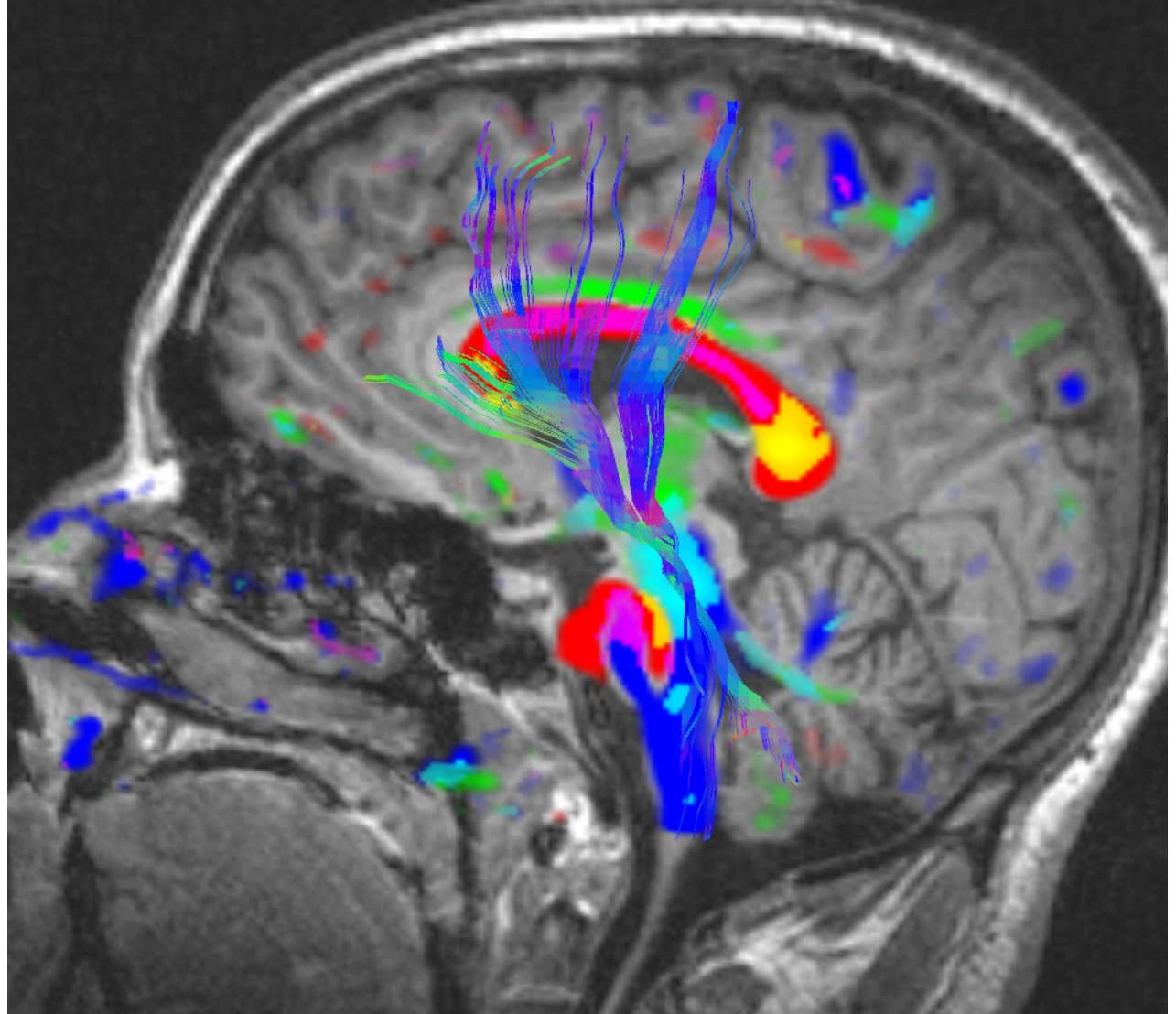
Pim Pullens

Brain Innovation BV

sept 10, 2009

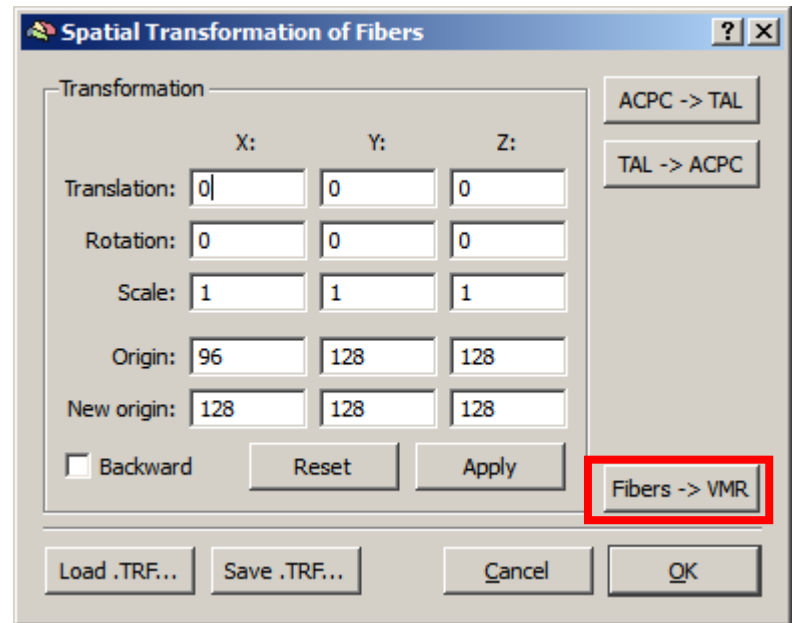
Do fiber tracking as usual

VOI based or
interactively

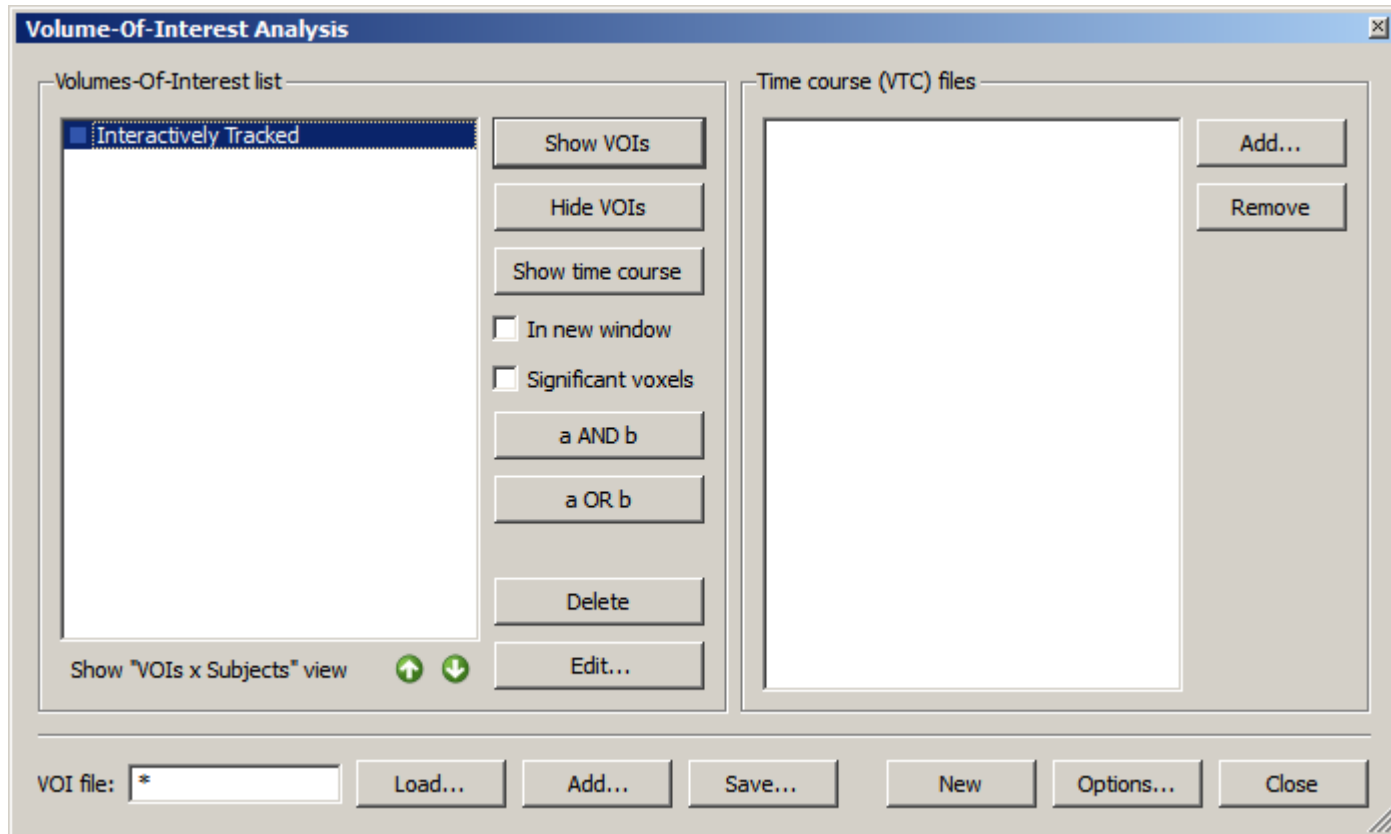


Go to DTI > Spatial Transformations

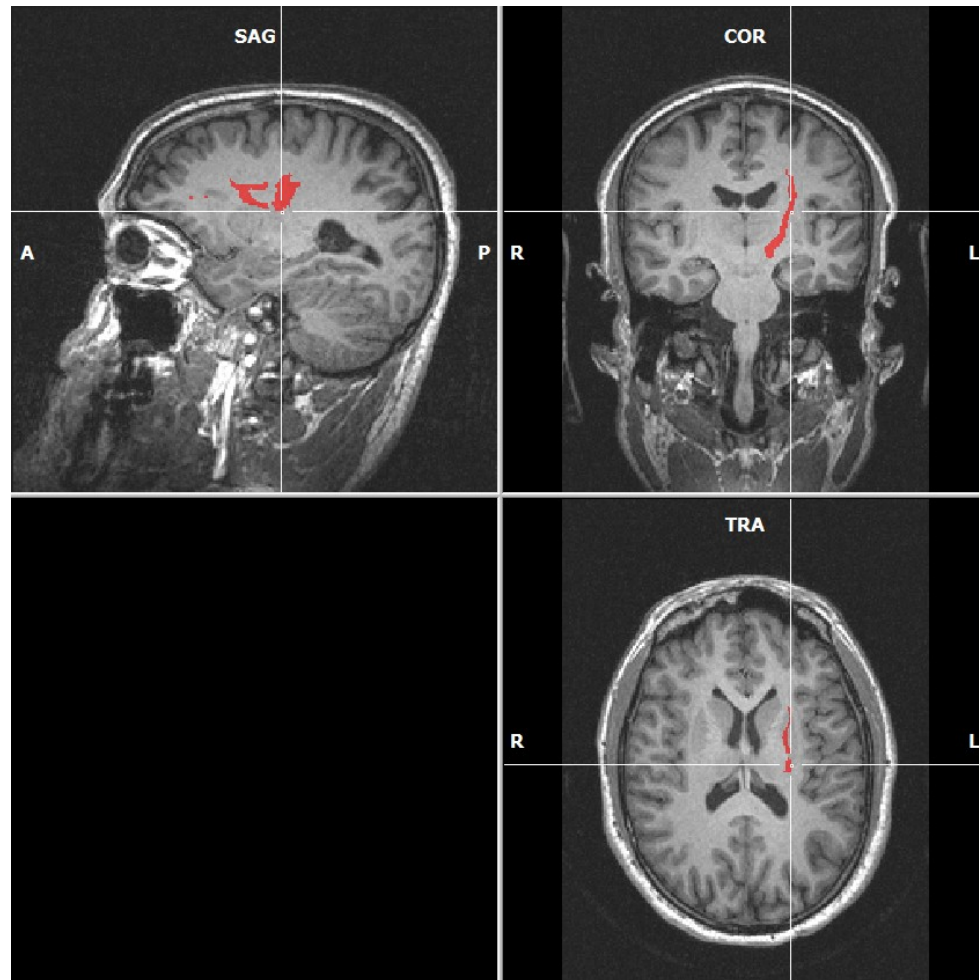
- Click Fibers > VMR



Result is a VOI



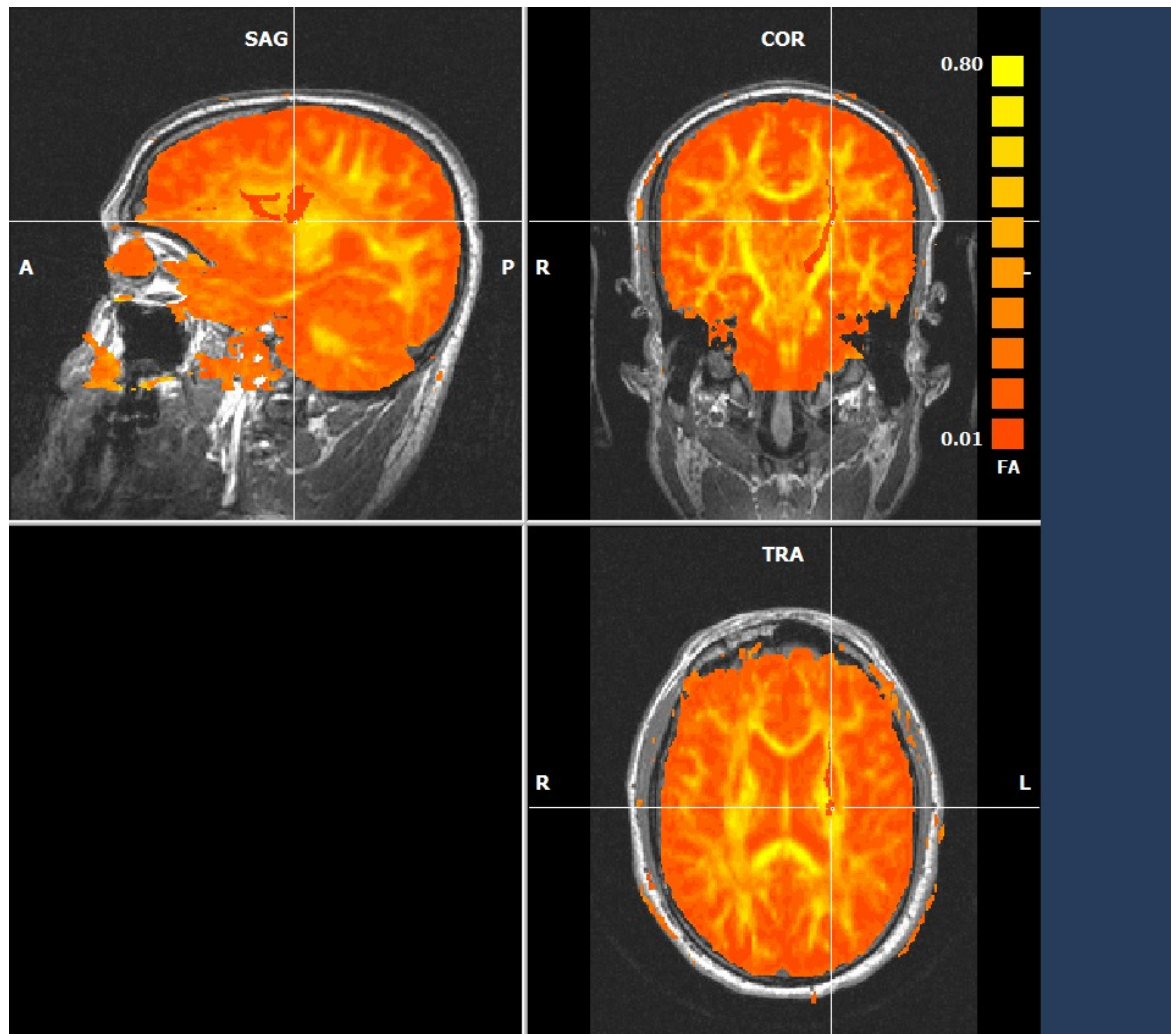
Fiber tract VOI



Load a FA or ADC map and extract VOI Details

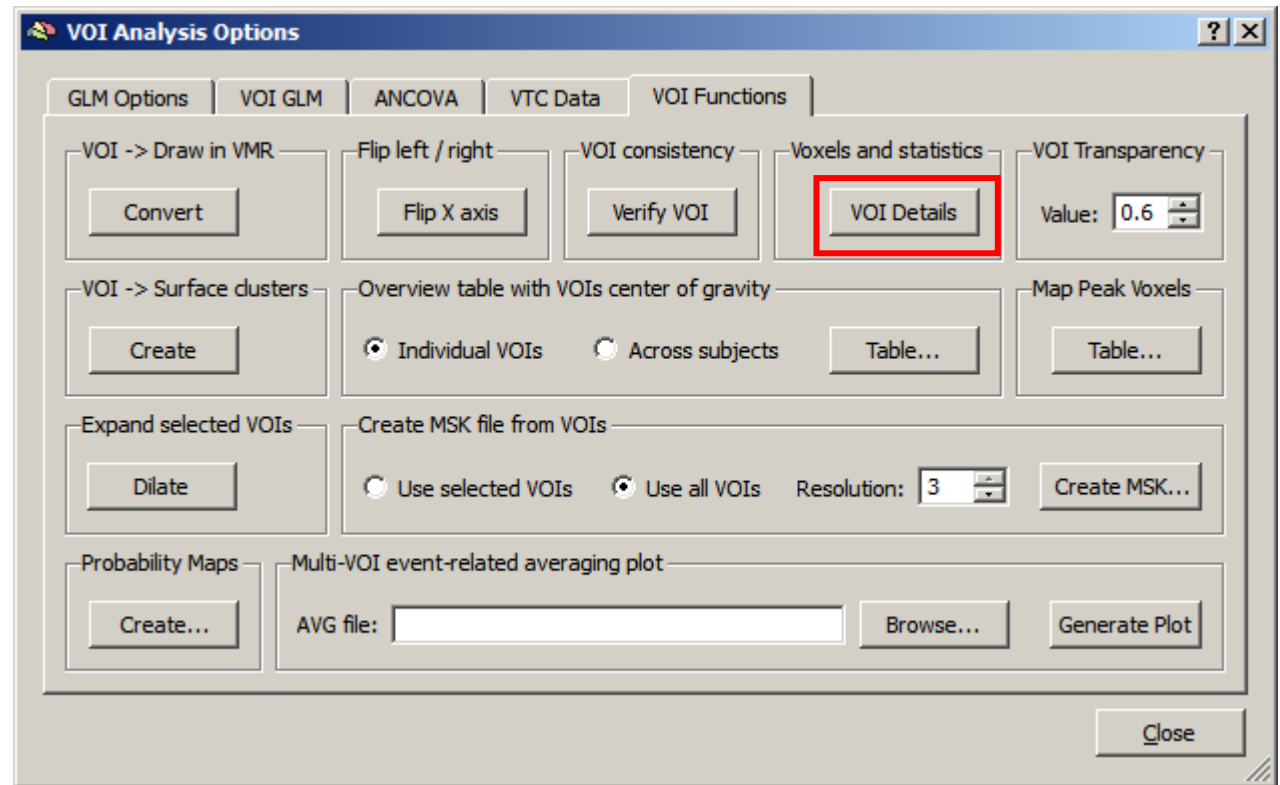
- Create map via DTI > Diffusion Weighted Data Analysis > Calculations
- Save/load map via Analysis > Overlay Volume maps

FA & VOI



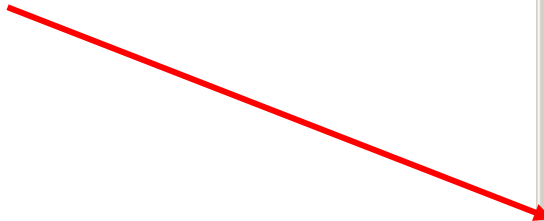
VOI Details

Go to Analysis > Region of interest analysis > Options

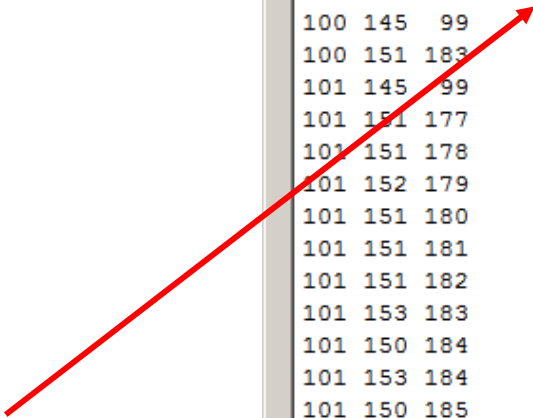


FA in VOI

Coordinate



FA value



ROI Details

DETAILS FOR VOI "Interactively Tracked"

RandomEffectsAnalysis: No

TypeOfStatistic: FA

NrOfVoxels: 4520

AbsStatMinValue: 0.000000

AbsStatMaxValue: 0.907723

AvgStatValue: 0.476284

AvgPValue: 0.000000

StatWeightedMass: 2152.802979

PWeightedMass: 0.000000

ListOfVOIVoxels:

x	y	z	StatValue	p
100	145	99	0.148536	0.000000
100	151	183	0.282546	0.000000
101	145	99	0.135354	0.000000
101	151	177	0.339880	0.000000
101	151	178	0.333251	0.000000
101	152	179	0.303448	0.000000
101	151	180	0.334353	0.000000
101	151	181	0.342085	0.000000
101	151	182	0.333705	0.000000
101	153	183	0.140918	0.000000
101	150	184	0.523420	0.000000
101	153	184	0.156174	0.000000
101	150	185	0.531831	0.000000
101	153	185	0.171431	0.000000
101	150	186	0.547000	0.000000
101	153	186	0.168216	0.000000
101	149	187	0.803957	0.000000
101	150	187	0.562168	0.000000

Save... Close